



ELK Biotechnology

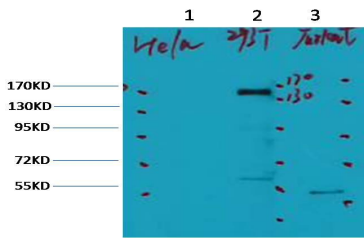
ErbB-2/HER-2 Mouse mAb

Catalog NO.: EM1079

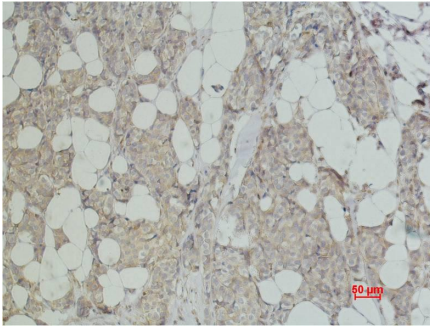
For research use only.

Overview

Product name	ErbB-2/HER-2 Mouse Monoclonal antibody
Source	Mouse
Applications	WB IHC
Species reactivity	Human
Recommended dilutions	WesternBlot:1/1000 Immunohistochemistry:1/200-500 NOTE: Optimal dilutions should be determined by the end user.
Immunogen	Synthetic Peptide
Species	Human
Storage	PBS with 0.02% sodium azide and 50% glycerol pH 7.4. Store at -20° C. Avoid repeated freeze-thaw cycles.
Isotype	IgG1
Clonality	Monoclonal
Concentration	1 mg/ml
Observed band	138kDa
GenelD (Human)	2064
Human Swiss-Prot No.	P04626
Cellular localization	Cytoplasm. Nucleus and Cell membrane
Alternative Names	CD340 HER 2/neu HER2 MLN9 MLN19 NEU NGL p185 p185erbB2 Proto oncogene c ErbB 2 Proto oncogene Neu TKR1
Background	ErbB 2 is a receptor tyrosine kinase of the ErbB 2 family. It is closely related in structure to the epidermal growth factor receptor. ErbB 2 oncoprotein is detectable in a proportion of breast and other adenocarcinomas as well as transitional cell carcinomas. In the case of breast cancer expression determined by immunohistochemistry has been shown to be associated with poor prognosis.



Western blot analysis of) HeLa 2) 293 3) Jurkat with ErbB-2 Mouse mAb diluted at:2000.



Immunohistochemical analysis of paraffin-embedded Human Breast Carcinoma using ErbB-2/HER-2 (EM1079) Mouse mAb diluted at:500.