



ELK Biotechnology

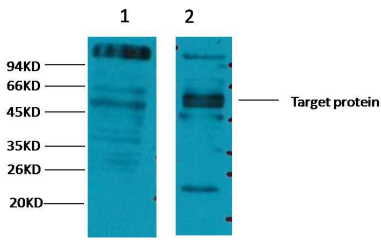
CD23 Mouse mAb

Catalog NO.: EM1082

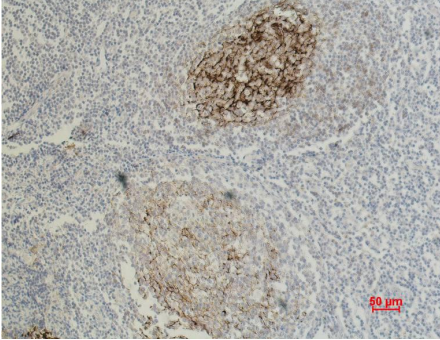
For research use only.

Overview

Product name	CD23 Mouse Monoclonal antibody
Source	Mouse
Applications	WB IHC
Species reactivity	Human Rat Mouse
Recommended dilutions	WesternBlot:1/1000 Immunohistochemistry:1/200-500 NOTE: Optimal dilutions should be determined by the end user.
Immunogen	Synthetic Peptide
Species	Human
Storage	PBS with 0.02% sodium azide and 50% glycerol pH 7.4. Store at -20° C. Avoid repeated freeze-thaw cycles.
Isotype	IgG1
Clonality	Monoclonal
Concentration	1 mg/ml
Observed band	36kDa
GenelD (Human)	2208
Human Swiss-Prot No.	P06734
Cellular localization	Cell membrane Membrane Secreted
Alternative Names	BLAST 2 CD23A CLEC4J Fc epsilon RII FCE2 FCER2 IGEBF Lymphocyte IgE receptor
Background	CD23 also known as Fc epsilon RII or Fc ϵ RII is the "low-affinity" receptor for IgE an antibody isotype involved in allergy and resistance to parasites and is important in regulation of IgE levels. Unlike many of the antibody receptors CD23 is a C-type lectin. It is found on mature B cells activated macrophages eosinophils follicular dendritic cells and platelets.



Western blot analysis of HeLa 2) Mouse Brain tissue with CD23 Mouse mAb diluted at:2000.



Immunohistochemical analysis of paraffin-embedded Human Tonsil Carcinoma using CD23 (EM1082) Mouse mAb diluted at:500.