



# ELK Biotechnology

alpha Lactalbumin Mouse mAb

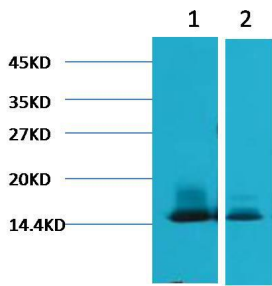
Catalog NO.: EM1084

For research use only.

## Overview

---

Product name	alpha Lactalbumin Mouse Monoclonal antibody
Source	Mouse
Applications	<b>WB</b>
Species reactivity	<b>Human Bovine</b>
Recommended dilutions	<b>WesternBlot:1/1000</b> <b>NOTE: Optimal dilutions should be determined by the end user.</b>
Immunogen	Synthetic Peptide
Species	Human
Storage	PBS with 0.02% sodium azide and 50% glycerol pH 7.4. Store at -20° C. Avoid repeated freeze-thaw cycles.
Isotype	IgG1
Clonality	Monoclonal
Concentration	1 mg/ml
Observed band	<b>16kDa</b>
GeneID (Human)	3906
Human Swiss-Prot No.	P00709
Cellular localization	Secreted
Alternative Names	N/A
Background	In primates alpha-lactalbumin expression is upregulated in response to the hormone prolactin and increases the production of lactose. $\alpha$ -Lactalbumin forms the regulatory subunit of the lactose synthase (LS) heterodimer and $\beta$ -14-galactosyltransferase (beta4Gal-T1) forms the catalytic component.



Western blot analysis of) Human Milk 2) Milk with alpha Lactalbumin Mouse mAb diluted at:3000.