



Recombinant Human EPDR1 (C-6His)

Catalog #	EPT021
Expression Host	Human Cells
DESCRIPTION	Recombinant Human Mammalian Ependymin-related Protein 1 is produced by our Mammalian expression system and the target gene encoding Ala38-Ser223 is expressed with a 6His tag at the C-terminus.
Accession	Q9UM22
Synonyms	Mammalian ependymin-related protein 1;EPDR1;Upregulated in colorectal cancer gene 1 protein;MERP1
Mol Mass	22.6 KDa
AP Mol Mass	28 &33 KDa, reducing conditions
Purity	Greater than 95% as determined by reducing SDS-PAGE.
Endotoxin	Less than 0.1 ng/μg (1 EU/μg) as determined by LAL test.
FORMULATION	Lyophilized from a 0.2 μm filtered solution of PBS, pH 7.4.





RECONSTITUTION

Always centrifuge tubes before opening. Do not mix by vortex or pipetting.

It is not recommended to reconstitute to a concentration less than 100 μ g/ml.

Dissolve the lyophilized protein in distilled water.

Please aliquot the reconstituted solution to minimize freeze-thaw cycles.

SHIPPING

The product is shipped at ambient temperature.

Upon receipt, store it immediately at the temperature listed below.

STORAGE

Lyophilized protein should be stored at $< -20^{\circ}\text{C}$, though stable at room temperature for 3 weeks.

Reconstituted protein solution can be stored at $4-7^{\circ}\text{C}$ for 2-7 days.

Aliquots of reconstituted samples are stable at $< -20^{\circ}\text{C}$ for 3 months.

BACKGROUND

EPDR1 is a member of the ependymin family. EPDR1 is a type II transmembrane protein that is similar to two families of cell adhesion molecules, the protocadherins and ependymins. It may play a role in calcium-dependent cell adhesion. EPDR1 is glycosylated, and the orthologous mouse protein is

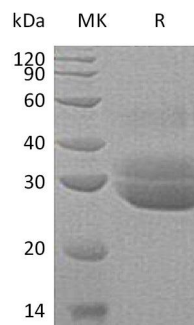




ELK Biotechnology

localized to the lysosome. Alternative splicing results in multiple transcript variants. A related pseudogene has been identified on chromosome 8.

SDS-PAGE



+86-27-59760950

ELKbio@ELKbiotech.com

www.elkbiotech.com

23-2, No.388 Gaoxin 2nd Road, Wuhan East Lake Hi-tech Development Zone, Hubei, P.R.C